

Metallic

Stick- und Häkelgarn

Perlé

No. 10

Art. No. 9810

dtex 1000
den 900

20 m

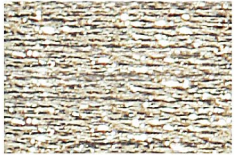


www.madeira.com **MADERA**

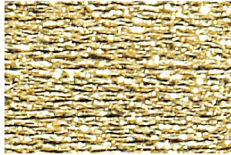
Farbkarte WFK 116

60% metallis. Polyester
40% Polyamid

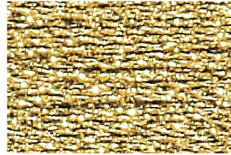
OEKO-TEX®
CONFIDENCE IN TEXTILES
STANDARD 100
95.0.4919 HOHENSTEIN HTTI
Geprüft auf Schadstoffe.
www.oeko-tex.com/standard100



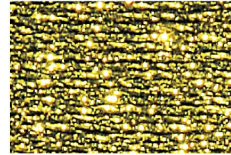
323
white gold



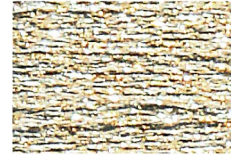
324
gold dust



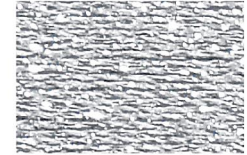
325
pure gold



326
antique gold



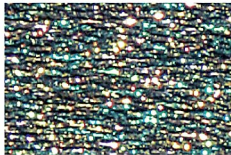
320
golden silver



342
silver



380
twilight



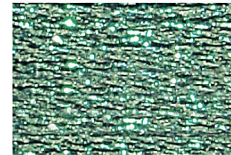
370
peacock



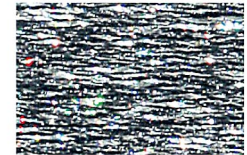
490
graphite



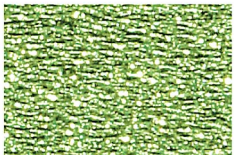
480
diamant



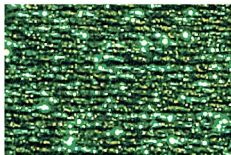
470
opal



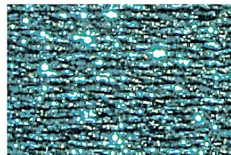
460
holographic



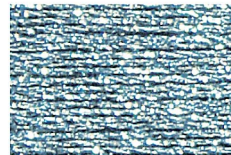
352
peridot



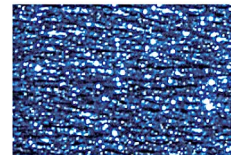
357
jade



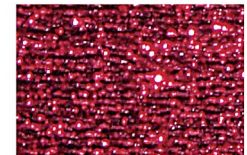
365
beryl



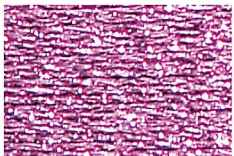
333
crystal blue



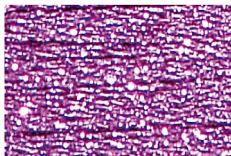
338
lapis



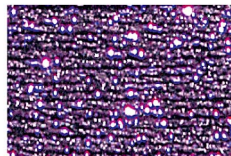
315
camellia



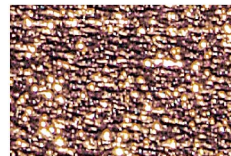
313
magnolia



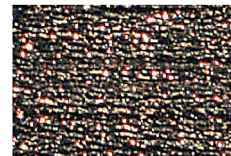
311
azulea



312
petunia



327
copper



328
bronze



360
black pearl